

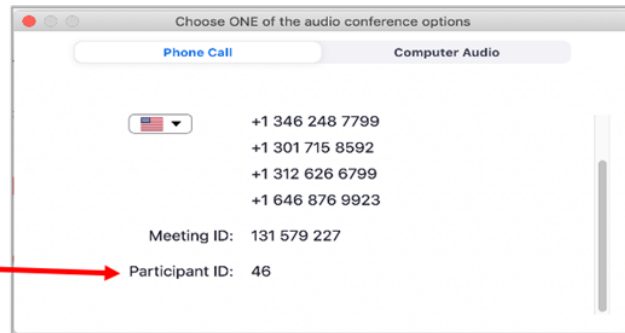
Franklin Pierce Boundary Review Committee Meeting #4

Welcome! Please Test Your Zoom Functions

4. Make sure your name appears in your participant video square.

1. Please connect via computer for audio.

If you must connect via phone for audio, ensure your video and audio are linked using the Participant ID pin.



2. Please turn on your video.

3. Tell us your favorite food – type it into the **chat box**.



Franklin Pierce Boundary Review Committee Meeting #4

- This session is being recorded for record-keeping purposes. By participating in this session, you are consenting to the recording, retention, and use of this session.
- At any time if you have a question or comment, feel free to place that in the chat, and we will respond to you as soon as possible. If you ask a question or comment verbally, please note that by doing so, you are consenting to the recording, retention, and use of your statements recorded as part of this session.
- Conversations in breakout groups will not be recorded.

Welcome!

The logo for Franklin Pierce Schools, featuring the text "FRANKLIN PIERCE SCHOOLS" in white, bold, sans-serif capital letters, stacked vertically within a red square.

**FRANKLIN
PIERCE
SCHOOLS**

**Boundary Review Committee
Meeting 4
April 29, 2021**

Committee Meeting #4 Intentions & Agenda



Agenda

Intentions

1. Participants understand the maps and summary statistics reports
2. Participants engage in scenario modeling
3. Participants determine the boundary option to present at the open house
4. Participants understand their roles and responsibilities at the open house as well as understand the format and framework

- Review charge and guiding principles
- Review Committee Option 1

Breakout scenario workshops

- Report outs
- Fist of Five – Open House Option

- Open House framework
- Open House best practices
- Open House roles and responsibilities

WHAT is a Boundary Review?

WHEN – the Schedule – We're dedicated to flexibility (thanks a lot COVID)!!

A multi-month,
highly structured
approach to data
analysis &
stakeholder
engagement that
will result in
informed, relevant
plans for Franklin
Pierce School
District



Completed meetings:

- Meeting 1 -> April 1st ✓
- Meeting 2 -> April 15th ✓
- Meeting 3 -> April 22nd ✓
- Meeting 4 -> April 29th ✓

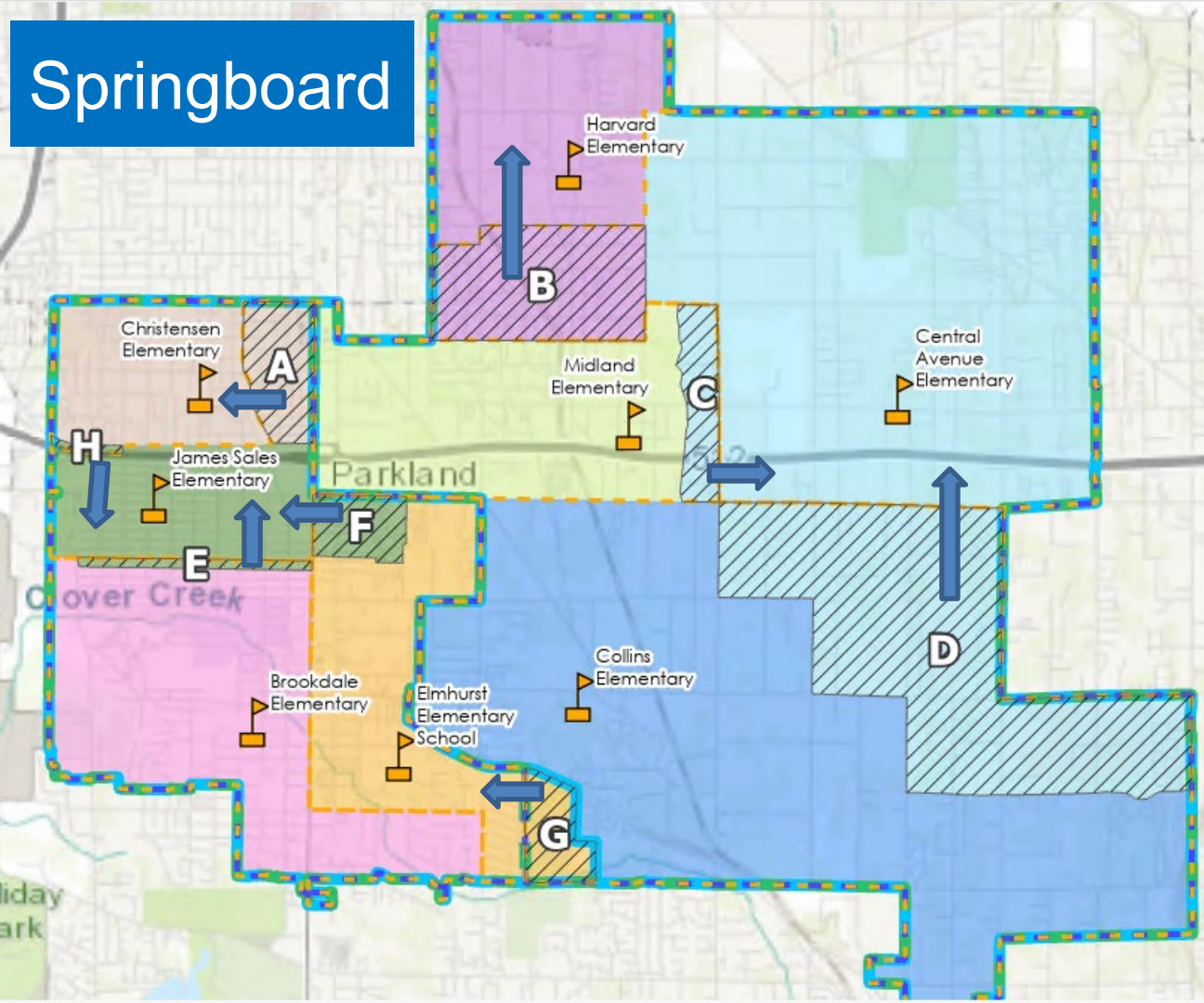
Upcoming meetings:

- Open house 1 -> May 6th
- Meeting 5 -> May 20th
- Meeting 6 -> May 27th
- Open house 2 -> June 3rd
- Meeting 7 (final) -> June 17th

Guiding Principles & Committee Charge



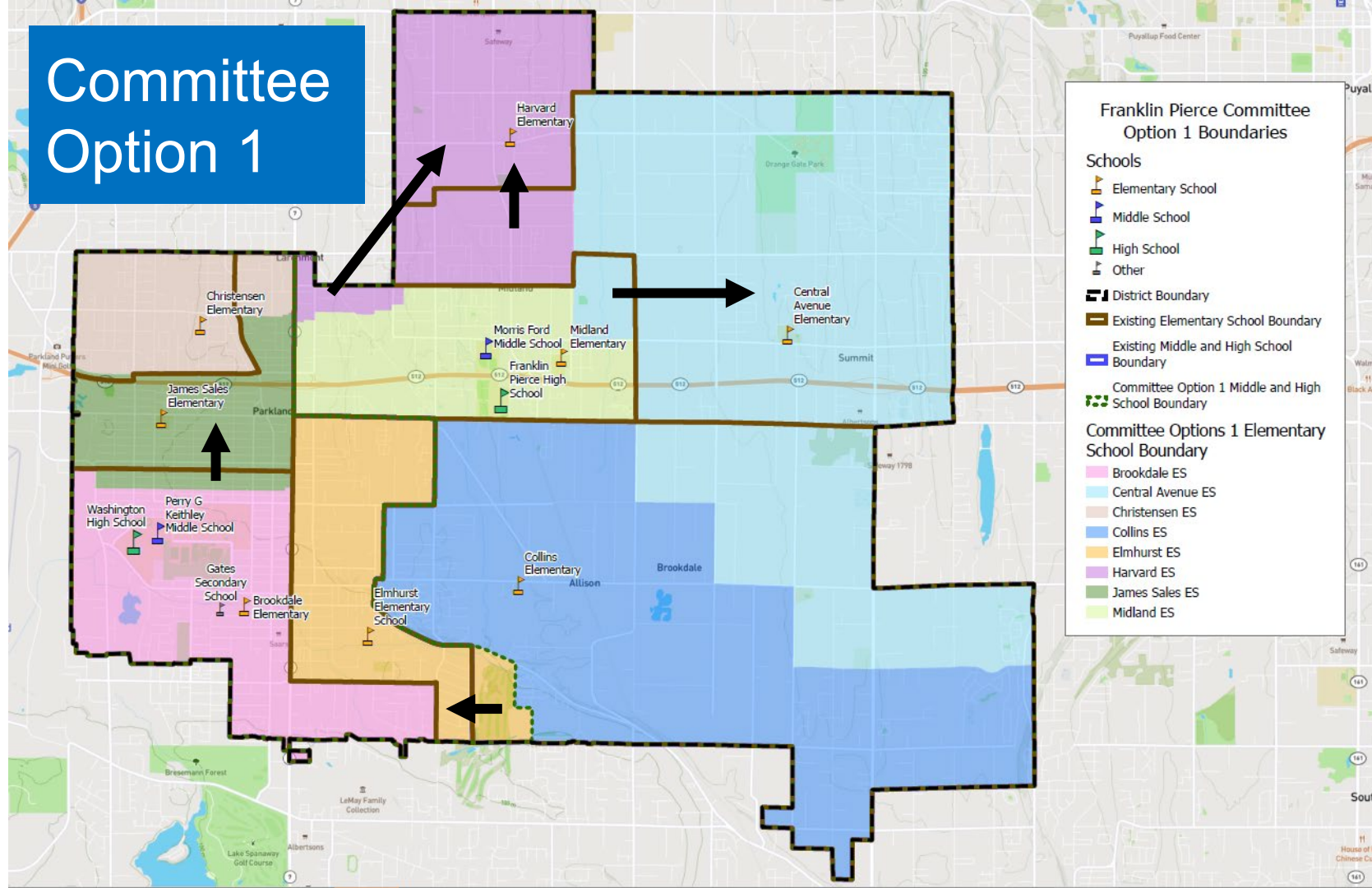
Springboard



Under the Springboard Option -
Change Areas:

- A. Adjusted from James Sales to Christensen
- B. Adjusted from Midland to Harvard
- C. Adjusted from Midland to Central Avenue
- D. Adjusted from Collins to Central Avenue
- E. Adjusted from Brookdale to James Sales
- F. Adjusted from Elmhurst to James Sales
- G. Adjusted from Collins to Elmhurst (MS/HS change as well but no students currently live in this area)
- H. Adjusted from Christensen to James Sales

Committee Option 1



Committee Option 1 Map Statistics

Enrollment and Forecasted Enrollment

Attendance Area

Existing

Committee Option 1

School Name	Total Capacity	2019 Count	2019 +/-	2019 % Capacity	2024 Forecast	2024 +/-	2024 % Capacity	2029 Forecast	2029 +/-	2029 % Capacity	2019 Count	2019 +/-	2019 % Capacity	2024 Forecast	2024 +/-	2024 % Capacity	2029 Forecast	2029 +/-	2029 % Capacity
Central Avenue ES	513	439	-74	86%	409	-104	80%	427	-86	83%	447	-66	87%	423	-90	82%	442	-71	86%
Collins ES	513	516	3	101%	535	22	104%	591	78	115%	403	-110	78%	412	-101	80%	459	-54	89%
Harvard ES	513	400	-113	78%	342	-171	67%	358	-155	70%	534	21	104%	462	-51	90%	486	-27	95%
Midland ES	519	514	-5	99%	475	-44	92%	513	-6	99%	470	-49	91%	438	-81	84%	474	-45	91%
Brookdale ES	513	502	-11	98%	417	-96	81%	427	-86	83%	435	-78	85%	363	-150	71%	373	-140	73%
Christensen ES	475	447	-28	94%	378	-97	80%	386	-89	81%	456	-19	96%	395	-80	83%	405	-70	85%
Elmhurst ES	466	392	-74	84%	355	-111	76%	363	-103	78%	409	-57	88%	383	-83	82%	393	-73	84%
James Sales ES	513	409	-104	80%	355	-158	69%	357	-156	70%	466	-47	91%	390	-123	76%	391	-122	76%
Morris Ford MS	1,095	1,038	-57	95%	950	-145	87%	989	-106	90%	1,002	-93	91%	915	-180	84%	953	-142	87%
Perry G Keithley MS	1,025	901	-124	88%	774	-251	75%	734	-291	72%	937	-88	91%	808	-217	79%	771	-254	75%
Franklin Pierce HS	1,689	1,148	-541	68%	1,237	-452	73%	1,292	-397	76%	1,116	-573	66%	1,192	-497	71%	1,248	-441	74%
Washington HS	1,530	971	-559	63%	954	-576	62%	913	-617	60%	1,003	-527	66%	999	-531	65%	956	-574	62%

Existing Boundaries
2019 Enrollment

Existing Boundaries
Forecasted Enrollment

Scenario Boundaries
2019 Enrollment

Scenario Boundaries
Forecasted Enrollment

Committee Option 1 Map Statistics

Socioeconomic Indicators

Based on 2019 enrollment ONLY, NOT FORECASTED

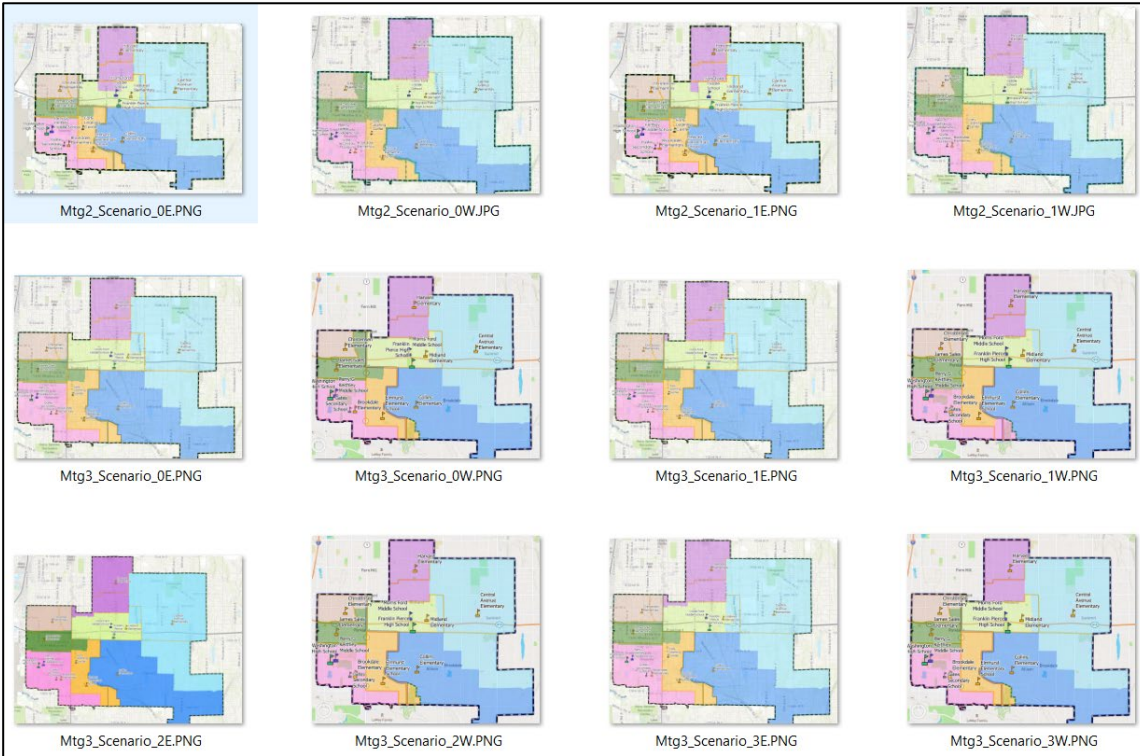
SES

Existing

Committee Option 1

Grade Group	Attendance Area (School Boundary)	% Special Education	% Racial Diversity	% LEP	% LAP	% McKinney-Vento	%SPED	% Racial Diversity	% LEP	% LAP	% McKinney-Vento
ES	Central Avenue ES	11.1%	50.1%	11.1%	17.6%	1.1%	11.7%	47.3%	8.2%	16.0%	1.3%
ES	Collins ES	12.2%	59.1%	10.6%	20.7%	2.8%	11.8%	60.4%	11.1%	21.2%	3.0%
ES	Harvard ES	13.9%	83.7%	37.7%	30.6%	6.2%	14.7%	78.3%	31.7%	28.4%	4.8%
ES	Midland ES	15.0%	72.6%	13.8%	20.0%	4.1%	13.7%	73.1%	13.7%	20.1%	4.3%
ES	Brookdale ES	11.6%	70.9%	12.8%	23.7%	6.4%	10.4%	72.0%	13.3%	24.2%	6.1%
ES	Christensen ES	15.1%	76.1%	14.6%	14.9%	4.9%	14.3%	76.7%	15.0%	15.7%	4.5%
ES	Elmhurst ES	10.9%	70.1%	12.4%	18.7%	3.3%	10.9%	70.1%	12.4%	18.7%	3.3%
ES	James Sales ES	12.3%	71.9%	14.1%	25.9%	4.3%	13.9%	70.1%	13.2%	24.7%	5.2%
MS	Morris Ford MS	9.3%	69.0%	7.6%	17.8%	4.5%	9.6%	68.4%	7.8%	17.9%	4.6%
MS	Perry G Keithley MS	13.8%	70.0%	7.7%	18.6%	4.5%	13.4%	70.5%	7.5%	18.4%	4.3%
HS	Franklin Pierce HS	10.0%	62.3%	7.7%	1.4%	4.5%	10.1%	62.1%	7.8%	1.4%	4.2%
HS	Washington HS	14.6%	69.0%	5.9%	5.7%	6.9%	14.4%	69.0%	5.9%	5.7%	7.2%

Reminder - Previous Scenarios



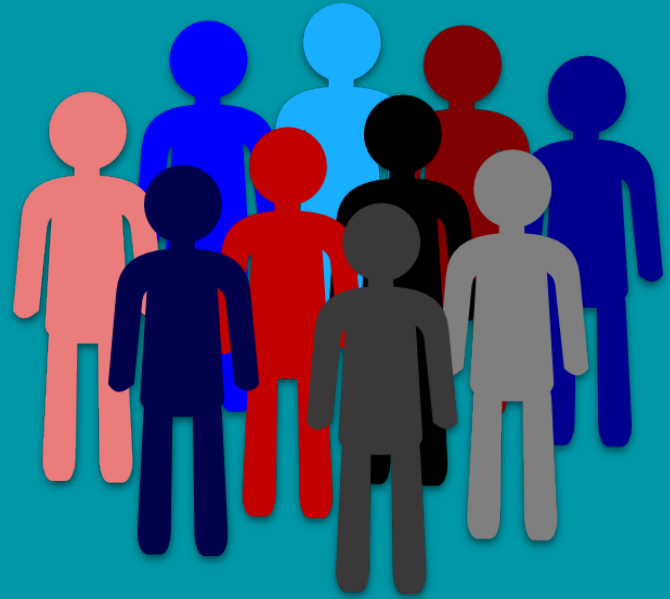
Scenario
Library
Updated Each
Meeting with:

- Maps
- Stats

Let's check in...

Any questions?

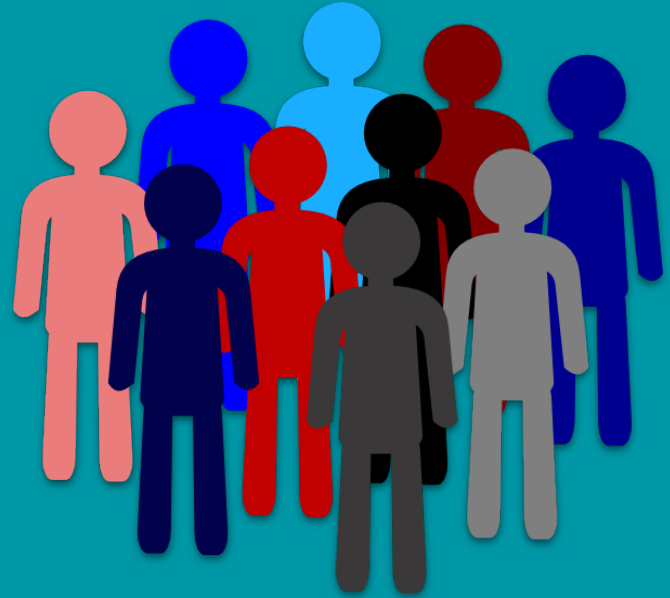
Break and then Break-out!



Report out

Fist to five

Modified Boundary Option?



Fist to Five

7/26/2022

Fist



I don't
support
this

One



I have
some
concerns, if
they can be
addressed,
I would lend
my support

Two



I have
some
concerns
but will
support it
for now

Three



I can
support
this option

Four



I will
support
this option

Five



I will
champion
this option

Next week...



Open
House